

# Rail-Drager Accessory Kits

## Front-Rail Accessories



**#DV-1018-030** Rail, 600mm for Front Rail  
**#DV-1018-031** Kit to Mount C-Frame to Vertical Channel

- Includes adapter rail, 2-side equipment rails and mounting hardware.  
 (C-Frame by others)



**#DV-1018-032** C-Frame and Mounting Kit for Vertical Channel

- Includes C-Frame, C-Lid, 2 drawers - A and B, adapter rail, 2-side equipment rails and mounting hardware.

**#DV-1018-033** C-Frame and Mounting Kit for Vertical Channel

- Includes C-Frame, extended top, 2 drawers - A and B, 2 side equipment rails and mounting hardware.



**#DV-1018-034** Total Surround Rail for Front Rail Shelf and Back of Column

## Gemina Accessories



**#DV-1018-051** Gemina-Rail

## General Accessories



**#DV-1018-061** Rail Holder, Long for 25mm pole (New Design)  
**#DV-1018-062** Rail Holder, Short for 25mm pole (New Design)



**#DV-1018-063** Tray for 25mm pole  
**#DV-1018-064** Set of Rails 2 x 200mm with assembly material



**#DV-1018-065** Center, Post-Mounted Shelf for Extension Arm



**#DV-1018-066** Pole-Mounted, Extension Arm for 25mm pole

# Rail-Drager Accessory Kits

## Equipment Carriers



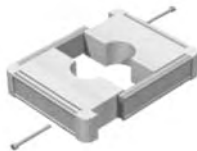
- #DV-1018-001 Parallel Rail-1 B
- #DV-1018-002 Parallel Rail-1.5 B

## Equipment Carriers



- #DV-1018-003 Double Swivel Rail for 38mm tube

## Equipment Carriers



- #DV-1018-004 Compact Rail for 38mm tube

## Front-Rail Accessories



- #DV-1018-026 Side Rail for Front-Rail Shelf



- #DV-1018-027 U-Rail for Front Rail Shelf and Back of Column



- #DV-1018-028 U-Rail for Front Rail Shelf



- #DV-1018-029 Surround Rail for Column, 2 Sides and Back