

# Positioning & Padding Devices

## Troop Elevation Pillow®

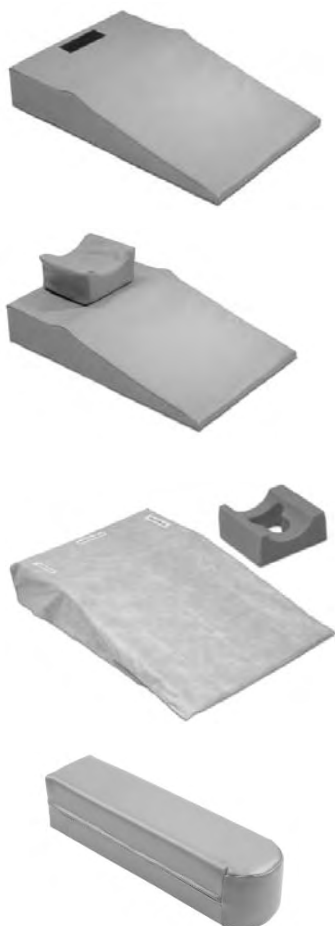
The Troop Elevation Pillow is a foam-filled intubation aid designed by an anesthesiologist for properly elevating obese patients as they prepare them for surgery. The pillow elevates the patient's head (upper body) in order to optimize airway positioning. It quickly achieves the proper head-elevated laryngoscopy position, (H.E.L.P.) and helps eliminate the need to stack blankets.

### Indications for Use

- General and Regional Anesthesia for obese patients.
- Local Anesthesia w/ I.V. Sedation for obese patients.
- Aid to improve mask and spontaneous ventilation.
- Obstetric C-Section cases.
- ENT, Head & Neck, Facial Surgeries.
- Neurosurgery; positioning aid for Anterior Cervical Fusion.
- Bariatric Surgery.
- X-Ray/Cath Lab Procedures.
- Bariatric Clinics.

### Benefits

- Aids Airway Management for obese patients.
- Improves "Ease of Breathing."
- Obese patients breathe more comfortably during pre-oxygenation (pre-induction) and during regional anesthesia.
- The Elevation Pillow greatly facilitates mask ventilation.
- Helps align the Upper Airway Axes.
- Easier, faster set-up eliminating "stacking of blankets."
- Stable patient positioning is maintained during surgery.



Order #	Description	Quantity
#10-910-00	Disposable, Barrier Covered Troop Elevation Pillow (TEP)	4/Box
#10-910-03	Disposable, Barrier Covers for Troop Elevation Pillow (TEP)	30/Box
#10-910-01	Vinyl Covered, Reusable Troop Elevation Pillow & Head Cradle (set of 2 items)	1 Set per Box
#96-8815	Disposable Head Cradle, Foam/Adult (item sold separately)	24/Box
#10-910-02	Vinyl Head Cradle, Reusable	4/Box
#10-910-04	Disposable, Barrier Covered Troop Elevation Pillow Addition (TEPA)	2/Box
#10-910-05	Vinyl Covered, Reusable Troop Elevation Pillow Addition (TEPA)	1/Box
#10-910-06	Vinyl Covered, Reusable TEP Pillow Set including TEP, TEPA and Head Cradle (set of 3 items)	1 Set per Box
#10-910-07	Vinyl Covered, Reusable Elevated Arm Board Pads	1 Pair per Box

Patents:  
US 6,751,818 B2  
US 7,077,141 B2

# Positioning & Padding Devices

## Oasis Elite

### Lightweight · Superior · Reusable · Pressure Relief

Oasis Elite is the newest innovation in pressure relief for the OR. It combines a unique lightweight foam with silicone Trugel to provide superior pressure relief and patient protection in the OR. Oasis Elite offers all the properties of the original Oasis product range, with even greater benefits - lightweight pressure relief with a difference.

Tests indicate that this unique combination of gel and foam provides enhanced protection during surgical procedures. The silicone based Trugel and slow-recovery foam work together to conform to the body shape, distributing weight over a greater surface area to reduce potential nerve damage.

Oasis Elite products are more than 50% lighter than comparable gel-only products. Not only do they offer superior pressure relief, Oasis Elite products are designed for easier handling and manipulation by medical personnel during preparation and surgery. All products are latex-free and feature a non-slip base to ensure improved patient safety.

## Head and Neck

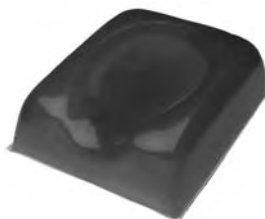
Closed Head Ring		
Order #	Description	Dimensions (mm)
#CH-EL011	Adolescent	140 x 34
#CH-EL012	Adult	200 x 50
Conforms comfortably to the patients head. Distributes weight & relieves pressure effectively. Suitable for use in many surgical positions.		



Open Head Ring		
Order #	Description	Dimensions (mm)
#CH-EL021	Adolescent	140 x 34
#CH-EL022	Adult	200 x 54
Soft, comfortable and durable. Supports the patient's face and allows access for intubation during surgery.		



Supine Head Rest		
Order #	Description	Dimensions (mm)
#CH-EL152	Adolescent	270 x 230 x 60
#CH-EL151	Adult	272 x 237 x 90
Ideal for positioning the patient during eye surgery and other procedures in the supine position. Ergonomically shaped to position the patient's head and effectively protect against the development of pressure sores.		



Prone Head Rest		
Order #	Description	Dimensions (mm)
#CH-EL141	Large	280 x 230 x 145
#CH-EL142	Medium	230 x 190 x 130
The Oasis Elite Prone Head Rest is lightweight, durable and easy to handle. The unique design provides excellent support, stability, comfort & protection during surgery in the Prone position. Openings at both sides allow endotracheal tube access.		



### Correct Positioning of the Oasis Elite Prone Headrest

Correct positioning is very important to patient safety. In the prone position the patient should be aligned and it is recommended to use Oasis Elite Chest Rolls in conjunction with the Prone Headrest for effective positioning.

# Positioning & Padding Devices

## Body

Table Pads		
Order #	Description	Dimensions (mm)
#CH-EL030	Universal Table Pad	520 x 520 x 20
#CH-EL031	3/4 Length Table Pad	1150 x 520 x 20
<p>The Oasis Elite Table Pad can be used to protect the body during procedures in the Supine, Prone, Trendelenburg, Reverse Trendelenburg and Lithotomy positions.</p> <p>The Oasis Elite 3/4 length table pad is designed to provide effective pressure relief during Lithotomy procedures.</p>		



## Extremities

Armboard Pad		
Order #	Description	Dimensions (mm)
#CH-EL070	Armboard Pad	400 x 125 x 20
#CH-EL072	Armboard Pad	600 x 125 x 20
<p>The Oasis Elite Armboard Pads provide effective pressure relief when the arm is extended during various surgical procedures.</p>		



Contoured Armboard Pad		
Order #	Description	Dimensions (mm)
#CH-EL101	Contoured Armboard Pad	510 x 150 x 35
<p>The Oasis Elite Contoured Armboard Pad is anatomically shaped to provide added support and stability.</p>		



Heel Support Pads		
Order #	Description	Dimensions (mm)
#CH-EL130	Heel Support Pads	180 x 100 x 70
<p>The Oasis Elite Pads provide support and maximum protection for the heels, even during the longest surgical procedures. They support the Achilles and effectively remove pressure from the heels.</p> <p>For best weight distribution, correct elevation and added comfort, it is recommended to use the #CH-EL210 (Dome Positioner) or #CH-EL216 (Chest Roll) under the knees.</p>		



# Positioning & Padding Devices

Dome Positioner		
Order #	Description	Dimensions (mm)
#CH-EL210	Dome Positioner	350 x 150 x 75
<p>The lightweight positioner can be used to position and protect the patient during various surgical procedures in the Lateral, Prone and Supine positions. It can be used to position and protect the patient during shoulder, chest and hip operations, as well as providing maximum pressure protection under the knees while the patient is in the Supine position. It can also help prevent pressure on the dorsum of the foot for patients in the prone position.</p>		



Flat Bottom Chest Roll		
Order #	Description	Dimensions (mm)
#CH-EL214	Flat Bottom Chest Roll	305 x 150 x 100
#CH-EL215	Flat Bottom Chest Roll	405 x 150 x 100
#CH-EL216	Flat Bottom Chest Roll	510 x 150 x 100
#CH-EL217	Flat Bottom Chest Roll	405 x 150 x 150
#CH-EL218	Flat Bottom Chest Roll	510 x 150 x 150
#CH-EL219	Flat Bottom Chest Roll	305 x 150 x 150
<p>Chest rolls provide excellent support and stability during surgery in the prone position. The lightweight feature enhances the durability of this product.</p>		



Oasis Elite Lateral Positioner		
Order #	Description	Dimensions (mm)
#CH-EL900	Lateral Positioner	720 x 500 x 160
<p>The lateral positioner is designed to accommodate both the shoulder and upper arm and provide exceptional pressure relief and nerve protection. Originally designed for total hip replacement surgery, it is also suitable for chest, shoulder, kidney and other positions where the patient is in the lateral position. It is particularly effective in surgery carried out under regional anesthetic.</p>		



# Positioning & Padding Devices

## Oasis The Original Silicone Solution

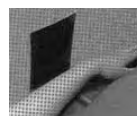
Oasis Elite is complimented by Oasis, an extensive range of reusable silicone gel pads and positioners, which provide effective protection and comfort to the patient during various surgical procedures. Oasis gel pads and positioners distribute patient weight evenly, with average pressure readings between 17 and 32 mmHg. This helps avoid the development of pressure sores and therefore promotes a healthier and more comfortable environment for the patient and theatre staff.

Order #	Description	Dimensions (mm)
#CH-OA010	Closed Head Ring, Pediatric	90 x 40 x 20
#CH-OA011	Closed Head Ring, Adolescent	140 x 60 x 35
#CH-OA012	Closed Head Ring, Adult	200 x 75 x 45
#CH-OA020	Open Head Ring, Pediatric	90 x 40 x 20
#CH-OA021	Open Head Ring, Adolescent	140 x 60 x 35
#CH-OA022	Open Head Ring, Adult	200 x 75 x 45
#CH-OA140	Face Pad	150 x 75 x 5
#CH-OA030	Operating Table Pad 520 mm	520 x 520 x 10
#CH-OA031	Operating Table Pad 1150 mm	1150 x 520 x 10
#CH-OA032	Full Length Operating Table Pad	1800 x 520 x 10
#CH-OA035	Hip Pad	520 x 520 x 10
#CH-OA036	Table Pad, Head Section	500 x 225 x 10
#CH-OA037	Table Pad, Torso Section w/ Perineal cut-out Section	500 x 990 x 10
#CH-OA038	Table Pad, Foot Section	500 x 500 x 10
#CH-OA039	Table Pad Set, 3 piece	-----
#CH-OA040	Perineal Table Pad	520 x 520 x 10
#CH-OA041	Profile Pad	520 x 520 x 10
#CH-OA042	3/4 Length Profile Pad	1145 x 520 x 12
#CH-OA043	3/4 Length Profile Pad w/cutout	1145 x 520 x 12
#CH-OA141	Prone Head Rest	-----



# Positioning & Padding Devices

Order #	Description	Dimensions (mm)
#CH-OA180	Perineal Post Pad	300 x 260 x 10
#CH-OA060 #CH-OA061	Ulnar/Brachial Nerve Protector Ulnar/Brachial Nerve Protector	380 x 100 x 10 450 x 200 x 10
#CH-OA070 #CH-OA071 #CH-OA072	Armboard Pad Armboard Pad, Large Armboard Pad, Long	380 x 110 x 10 600 x 200 x 10 600 x 125 x 10
#CH-OA101	Contoured Armboard Pad	510 x 150 x 35
#CH-OA102 #CH-OA100	Arm Retainer Cover, Wide Arm Retainer Cover	162 x 132 x 10 170 x 110 x 10
#CH-OA130	Oasis Heel Pads	200 x 100 x 65



Order #	Description	Dimensions (mm)
#CH-OA131-6	Heel Cups	
#CH-OA200	Heel and Ankle Protector	230 x 200 x 20
#CH-OA211 #CH-OA212 #CH-OA213	Flat Bottom Chest Roll Flat Bottom Chest Roll Flat Bottom Chest Roll	305 x 100 x 75 405 x 100 x 75 510 x 100 x 75
#CH-OA900	Oasis Lateral Positioner, with removable gel pad	720 x 500 x 160
#CH-OA050 #CH-OA051 #CH-OA052 #CH-OA053	Patient Positioner, Ex-Small Patient Positioner, Small Patient Positioner, Medium Patient Positioner, Large	160 x 80 x 60 330 x 80 x 60 295 x 110 x 60 380 x 140 x 80
#CH-OA220 #CH-OA221	Wilson Frame Pads Wilson Frame Pads	735 x 255 x 25 735 x 255 x 10